



WELCOME TO MAPLE SCHOOL

It's time to make the transition!

# TIME FOR TRANSITION

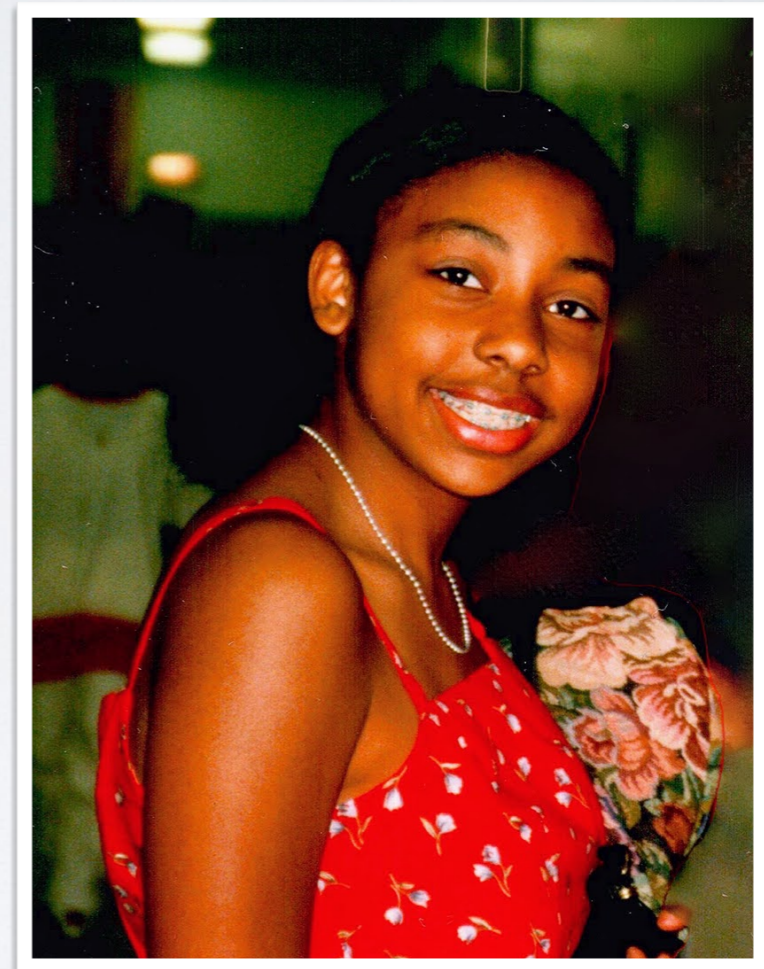
Student Comfort + Parent  
Comfort = Transition Success!



# TONIGHT IS ALL ABOUT CHANGE!



**Mr. Kurtz**



**Ms. Jaeger**

# TONIGHT IS ALL ABOUT CHANGE!



**Mr. Kurtz**



**Ms. Jaeger**

# COMMON 5TH GRADE QUESTIONS/CONCERNS

1. Homework
2. Changing Classes/Getting Lost
3. Lockers/Locks
4. Arriving Late to Class/Tardies
5. Teachers
6. Detentions
7. Classes
8. Making New Friends
9. Length of Classes/School Day
10. Extracurricular Options
11. And the List Continues...



# EXPECTATIONS FOR MIDDLE SCHOOL STUDENTS

- 6th Grade: Adapting and Getting Involved
- 7th Grade: Self-Advocating and Leadership
- 8th Grade: Legacy and Preparing for High School



# MIDDLE SCHOOL FUNDAMENTALS

- Youth undergo more rapid and profound personal changes between 10-15 than at any other time in their lives
- Rapid physical growth, changes in reasoning, the onset of abstract thinking, and an introduction to a range of social pressures define this phase



# FUNDAMENTALS CONTINUED



- Learning from mistakes...
- “I don’t know” - Believe them!
- Don’t bail them out - choices/natural consequences



# MIDDLE SCHOOL PHILOSOPHY

- Cognitive (Thinking Skills) + Affective (Social-Emotional Skills) = Balance for Students
- Focus on “Where Students Are At”
- High Academic Standards



# PREPARING FOR THEIR ARRIVAL

- 6th grade team members met/meet with their elementary counterparts and conduct transition meetings
- Building administrator communication
- 5th grade visits to Maple
- Locker Day - August 13 & 14



# MEET THE 6TH GRADE TEAM



# CORE & NON-CORE

(BLOCKED - 80 MINUTES)

- Math
- Language Arts
- Science
- Social Studies

(UNBLOCKED - 40 MINUTES)

- Physical Education (3 quarters)
- Health (1 quarter)
- Guided Studies/Study Strategies
- Creative Arts
  - PLTW, Art, Music, FACS
- World Languages
  - French, Mandarin, Spanish

# SAMPLE 6TH GRADE SCHEDULE

6th GRADE SCHEDULE				
Per.	Mon/Tues	Wed/Thurs	Friday	Materials Needed:
<b>BLOCK A</b>	Science Kearns (103)	S.S. Norquist (104)	Sci/S.S. Kearns/Norquist (103/104)	
<b>BLOCK B</b>	ELA Manders (107)	ELA Manders (107)	ELA Manders (107)	
	<b>ADVISORY</b>	<b>ADVISORY</b>	<b>ADVISORY</b>	Pencil Case/iPad
5	LUNCH	LUNCH	LUNCH	Appetite :)
6	PLTW King-Mulvihill (123)	PLTW King-Mulvihill (123)	PLTW King-Mulvihill (123)	
<b>BLOCK C</b>	Math Safranek (102)	Math Safranek (102)	Math Safranek (102)	
9	Spanish Cavnar (220)	Spanish Cavnar (220)	Spanish Cavnar (220)	
10	Health Rathge (223)	Health Rathge (223)	Health Rathge (223)	

PE Teacher: STAHOVIAK    Health Quarter: 1st (Mrs. Rathge, Rm. 223)

# 6TH GRADE TEACHERS EXPECT...

- ...you to help your child be organized.
- ...students to arrive to school on time.
- ...study skill tips to be used.
- ...assignment notebooks to be used.
- ...homework completed and turned in on time.
- ...Schoology to be used for pertinent information.
- ...you to ask to see your child's work.
- ...you to view your child's progress via Parent Portal.
- ...communication between home and school.

# ADVISORY IS....

- 20 minutes every day
- A time to check-in with point-person
- Small groups of students
- Social-Emotional Learning
- Inclusion & Belonging
- Executive Functioning
- Communication and discussion skills
- Develop personal goals



# 8TH GRADE PEER PARTNERS

- Assist with sixth grade Advisory activities
- Demonstrate pillars of Character Counts!
- Serve as mentors/role models





# STUDENT SUPPORT TEAM



- **Blake Zweig** and **JoAnn Dynkin** (School Psychologists)
- **Jen Winter** (Social Worker)
- **Stephanie Marcus** (Speech and Language Specialists)
- **Jodi Stipes** (English Language Learning Specialist)
- **Julie Kreczmer & David Karnoscak** (MTSS)

# ROLE OF STUDENT SUPPORT TEAM

- Work with students in general and special education
- Attend grade level and department team meetings
- Work with students individually or in groups
- Service may be short or long term (MTSS)
- Crisis intervention, as needed
- Collaborate with families, teachers, and community agencies

# MAPLE PTO

*Our PTO works together with teachers, parents, and your middle school student(s) to provide a fun and supportive environment during their years at Maple.*

- Register for PTO in August
  - Online School Directory
  - Ice Cream and Blizzard Days
  - Make a Donation
  - Special Lunch (Through a separate vendor)
- Communication via Maple Marquee, eBlasts, and Facebook
  - Maple PTO Website: <https://www.district30.org/maple-ptol/>
- Contact us any time at [maplepto@district30.org](mailto:maplepto@district30.org)



# PARENT PARTICIPATION AT MAPLE

- Contribute as Committee Co-Chair, Committee Member, Executive Board Officer
  - Exec Board Nominations are held in February
  - Committee Chair/Member Sign-Up Coming Soon! (May)
- Volunteering Opportunities
- Sixth Grade Dance Class
- Lew Blond Run
- Career Day



# MAPLE PTO - WHAT WE DO

*Through the help of our parent volunteers, the Maple PTO is able to offer a variety of educational and community engagement activities that enrich the school experience.*

## **Events / Committees**

8th Grade Career Day  
8th Grade Graduation  
Party & Reception  
8th Grade Snowflake  
6th Grade Dance Class  
All School Volley-Bash  
Lew Blond Run  
KAPO Liaison

## **Fundraising**

Blizzard Days  
Book Fair  
Dine Out Dates  
Ice Cream Days  
School Supplies Sale  
Special Lunch  
Spirit Wear & Magnets

## **School Support & Parent Education**

PTO General Meetings  
Teacher/Staff Appreciation &  
Hospitality  
School Gifts

The logo features the letters "PTO" in a large, bold, grey, distressed font. To the right of "PTO", the word "MAPLE" is written in a smaller, blue, sans-serif font. The entire logo is contained within a white rectangular box with a thin black border.

# GETTING INVOLVED

- Music programs
  - Band/Orchestra/Choir
- Many extracurricular opportunities including sports, competition teams, and other clubs
- Check out all clubs and programs on the Maple website



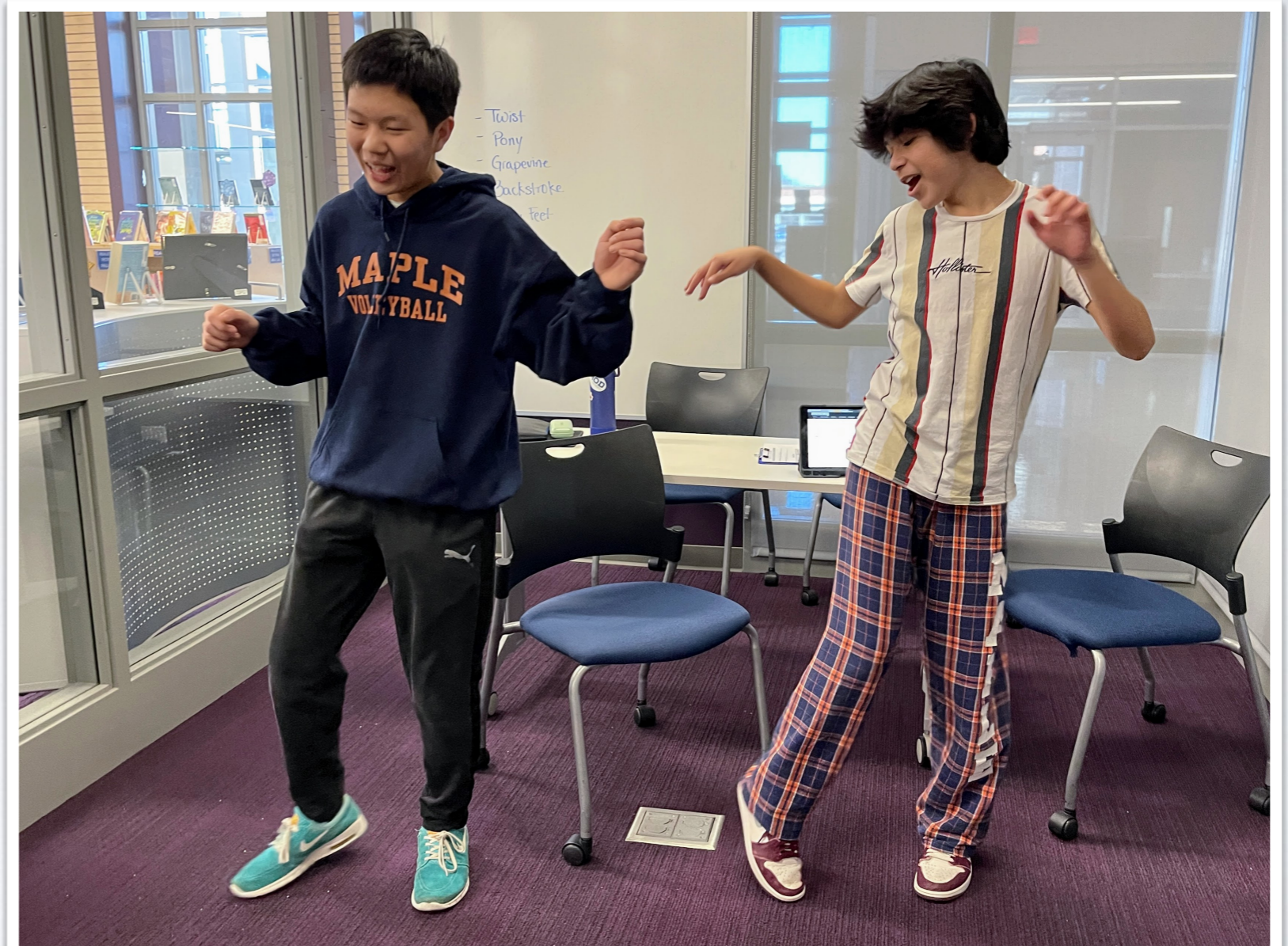
# LOGISTICS - LOCKERS & COMBINATIONS

For Students:

- Locking the Locker
- Sharing Combos

For Parents:

- Practicing Combos - [masterlock.com](http://masterlock.com)... seriously...



# LOGISTICS - COMMUNICATION

For Students:

- Daily Announcements, Email, Advisory

For Parents:

- Maple Marquee, Social Media, Parent Portal, Schoology, Email, Report Cards, Maple Website, Curriculum Night, Parent/Teacher Conferences





# LOGISTICS - HOMEWORK

For Students:

- Digital Management or Assignment Notebook
- PowerSchool

For Parents:

- Amount Varies - Consistently over 75 minutes should raise an eyebrow



# LOGISTICS - ABSENCES

## **ATTENDANCE MATTERS!**

If Absent:

For Students:

- Check PowerSchool
- Talk w/ teacher upon return

For Parents:

- Use Parent Portal to Log Absence
- Notify in advance if you know
- Excessive tardies/absences
- Sign in/Out
- We are your resource!

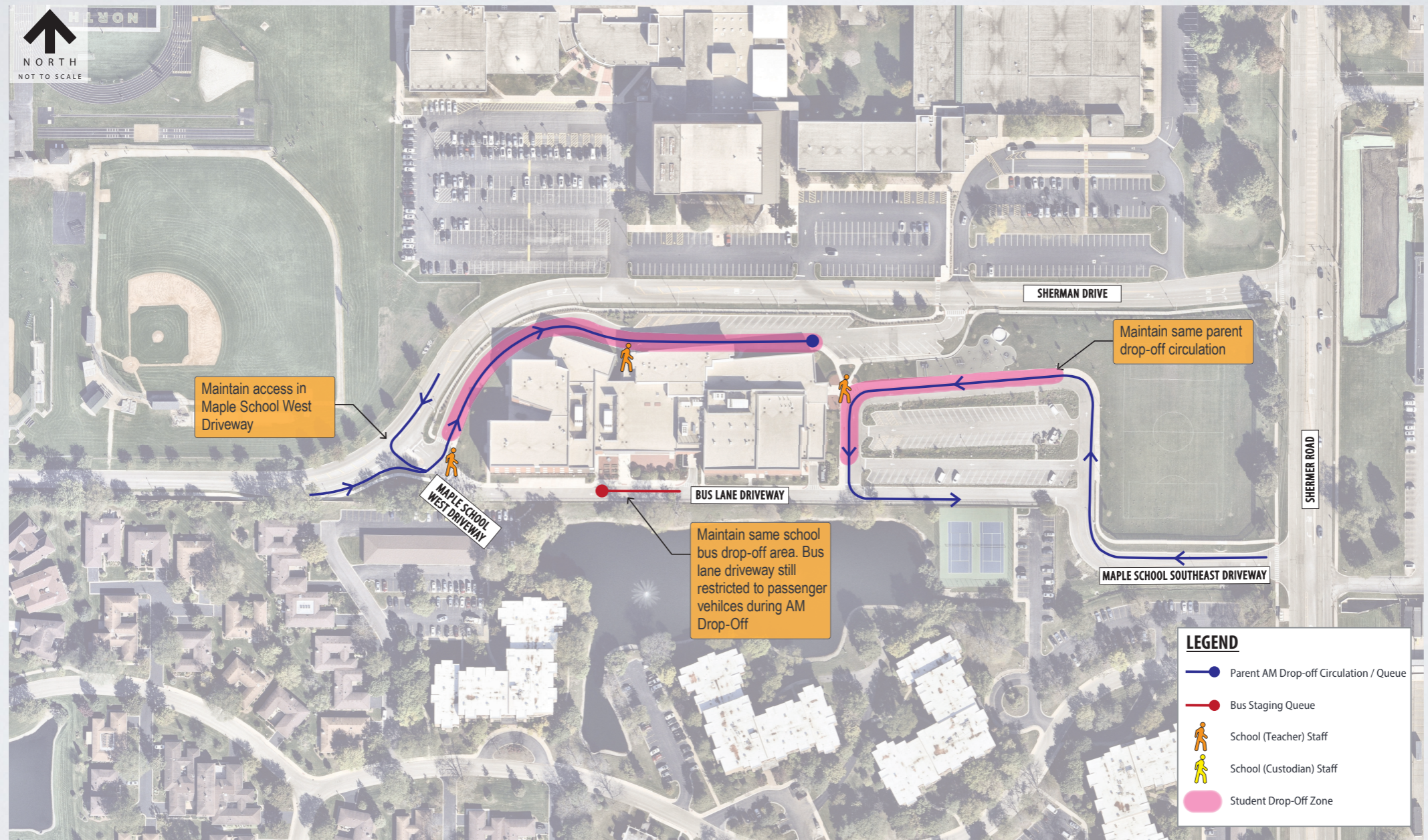


# LOGISTICS - TO & FROM

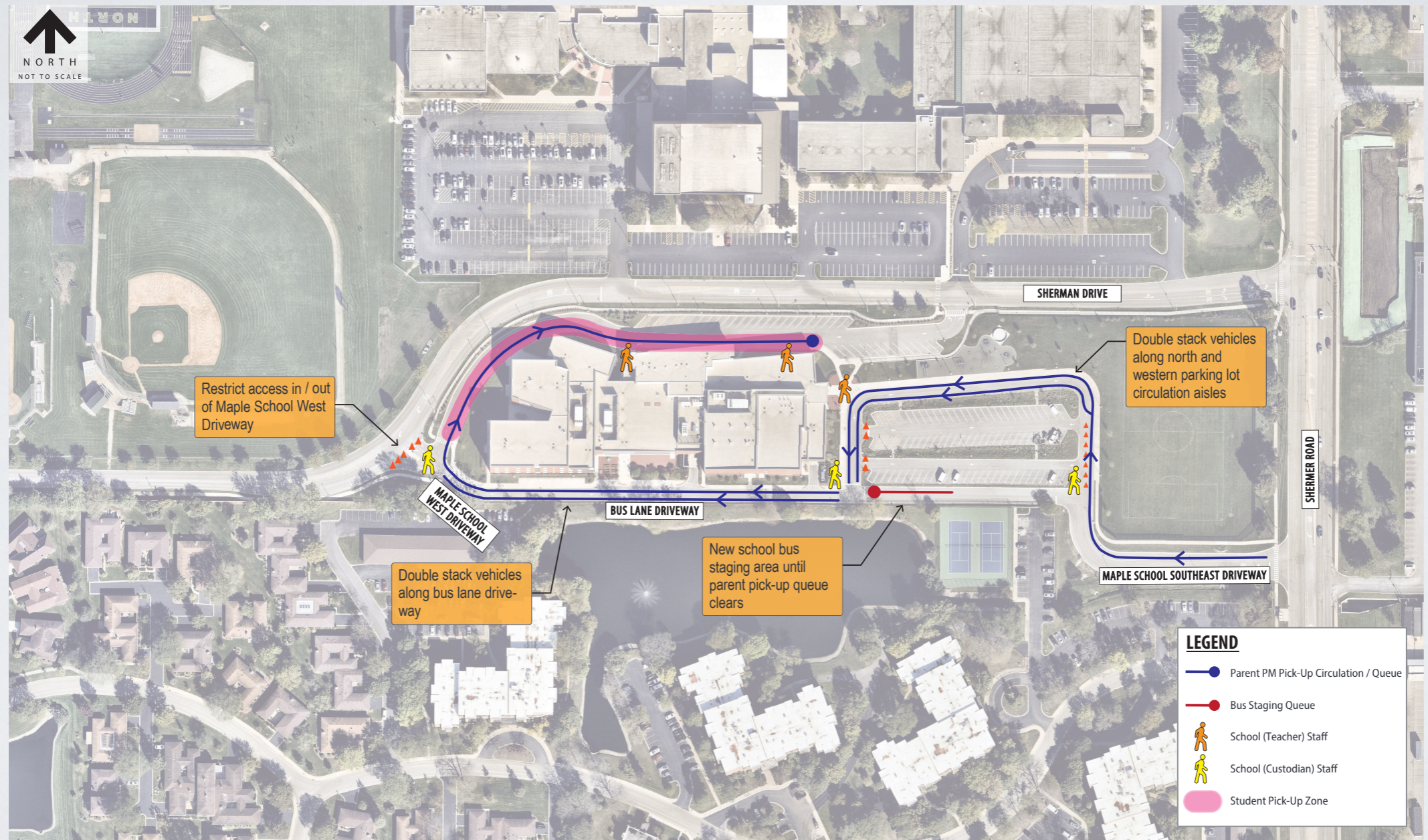
- Pick-Up/Drop-Off Procedures
- First Bell is 8:25 a.m.
- Final Bell is 3:35 p.m.
- Bussing Information
- Bikes



# LOGISTICS - DROP-OFF



# LOGISTICS - PICK-UP



# COMMON 5TH GRADE QUESTIONS/CONCERNS

1. Homework
2. Changing Classes/Getting Lost
3. Lockers/Locks
4. Arriving Late to Class/Tardies
5. Teachers
6. Detentions
7. Classes
8. Making New Friends
9. Length of Classes/School Day
10. Extracurricular Options
11. And the List Continues...



# OTHER IMPORTANT ITEMS

- e-Packet information posted on Maple website in August
- Locker Setup - August 13th and 14th
  - 9:00 a.m. - 12:00 p.m. & 1:00 p.m. - 4:00 p.m.
  - Hallway lock, locker assignments, locker setup

# FIRST DAY OF SCHOOL

- Bring your backpack with school supplies
- Buses run routes to/from school
- Report to Advisory
- Quest lunch program available
- Students attend all classes
- Opening School Ceremony - Beginning of the day





# MAPLE UNIFORMS

Band, Orchestra, and Choir Uniforms available NOW!

**The EmbroidMe Store**

**2845 Dundee Road, Northbrook**

**(847) 272-9000**

Credit cards accepted.

Band/Orchestra/Choir Uniforms: Polo Shirt and/or Sweater

WE ARE...ONE HERD!

“EDUCATION IS  
NOT THE LEARNING  
OF FACTS, BUT THE  
TRAINING OF THE  
MIND TO THINK”

*Albert Einstein*

